

Wall (Corner) Expansion Joint Profile

Product Information

Product Model	RCC-C
Product Type	Wall-Wall (Corner) Expansion Joint Cover
Material	Aluminum Alloy 6063 T6
Finish	Mill finish

Introducing our RCC-C profile—a straightforward and efficient solution for wall joints, tailored to simplify both installation and maintenance. Constructed from robust aluminum, this profile is designed to offer a hassle-free and durable answer to your joint requirements. Furthermore, the integration of a rubber gasket guarantees a seamless connection with the walls, effectively averting any scratches during movement.

Features and Benefits



Versatility

This profile is adaptable to various architectural styles and design preferences.



Corrosion Resistance

Crafted from corrosion-resistant materials, ensuring long-term durability even in challenging environments.



Ease of Customization

Allows for easy customization to meet specific project requirements, ensuring a tailored solution.



Quick Installation

Streamlined design facilitates a fast and straightforward installation process, saving time and labor costs.



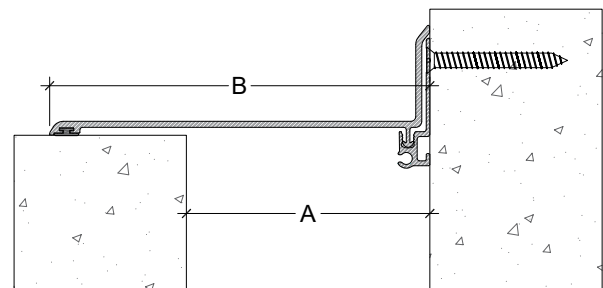
Low Maintenance

Minimal maintenance is required, reducing the overall cost of ownership and upkeep.

Maintenance

- > Regularly inspect the expansion joint cover for signs of damage or wear.
- > Clean with mild soap and water as needed to maintain appearance.

Code	Gap width A (mm)	Visible width B (mm)	Total movement (mm)
RCC 50C	50	82	70mm (+30 -40)
RCC 75C	75	116	105mm (+40 -65)
RCC 100C	100	156	145mm (+55 -90)
RCC 150C	150	216	205mm (+65 -140)



Length Standard length: 3 meters.

Fire Rating ASTM E84 Class A.

Installation Please follow the installation instructions provided in the J-CAP installation guide.